



# **Universal Handrail Post**

## **User Instructions**

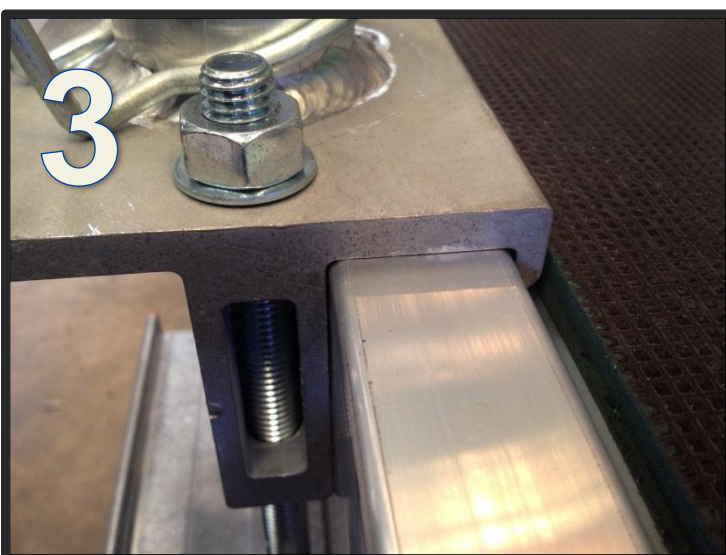
**April 2013**



UNDO THE NUTS ON THE SECURING BOLTS TO ALLOW CLAMPS TO FULLY SEPARATE.



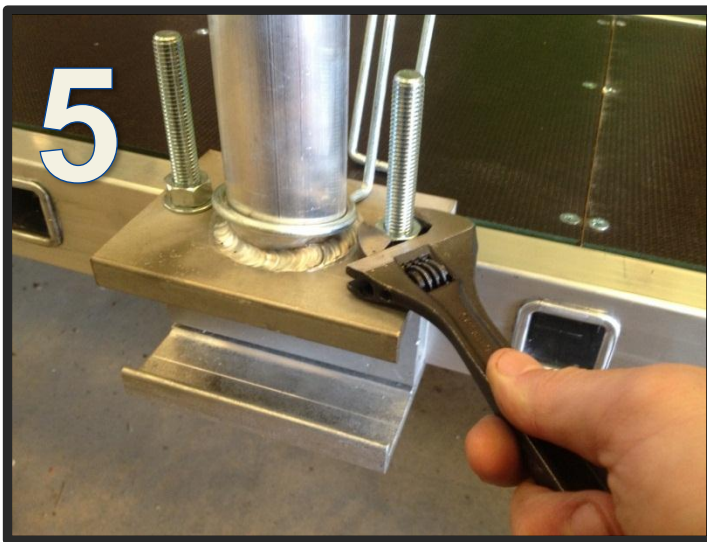
APPLY CORRECT SIDE OF THE CLAMP TO THE STAGING STILE.



CLAMP SHOULD FIT TIGHTLY AND SIT FLUSH TO THE STILE.



LIFT BOTTOM CLAMP INTO PLACE. ENSURE IT SITS FLUSH TO UNDERSIDE OF STILE.



SECURE THE M12 NUTS WITH A SUITABLE SPANNER. **ENSURE THEY ARE TIGHT.**



CHECK THAT BOTH THE BOTTOM AND TOP CLAMPS ARE SECURE AND FLUSH TO THE STILE SURFACES.



UNDO WINGNUTS  
AND INSERT  
HANDRAIL TUBE  
THROUGH THE  
U-BOLT ON THE  
APPROPRIATE  
SIDE.



HANDRAILS CAN BE  
ASSEMBLED ON EITHER  
SIDE OF THE  
UNIVERSAL HANDRAIL  
POST. ENSURE  
WINGNUTS ARE  
SECURED TIGHTLY.



PLACE TOEBOARD ON  
THE STAGING UP  
AGAINST THE  
HANDRAIL POST.  
SECURE THE  
TOEBOARD BY  
DROPPING THE CLIP  
OVER THE TOP AS  
SHOWN.